

ACCESSORIES FOR SIZE3 CABINETS

CABINET'S BASE

**Welded plinth**

Indicated for heavy duty cabinets. Provide to transport cabinets with forklift truck without using transport pallet.

**Material**

Sheet steel powder paint, light grey (RAL 7035)

**Scope of delivery**

Plinth with mounting accessories for fastening plinth to the cabinet.



For cabinet		Catalogue number
width [mm]	depth [mm]	Welded plinth 100 mm high
600	400	WZ-6282-15-16-011
	500	WZ-6282-15-15-011
	600	WZ-6282-15-14-011
	800	WZ-6282-15-13-011
800	400	WZ-6282-15-12-011
	500	WZ-6282-15-11-011
	600	WZ-6282-15-10-011
	800	WZ-6282-15-09-011

Package: 1 pc.

For cabinet		Catalogue number
width [mm]	depth [mm]	Welded plinth 100 mm high
1000	400	WZ-6282-15-08-011
	500	WZ-6282-15-07-011
	600	WZ-6282-15-06-011
	800	WZ-6282-15-05-011
1200	400	WZ-6282-15-04-011
	500	WZ-6282-15-03-011
	600	WZ-6282-15-02-011
	800	WZ-6282-15-01-011

Package: 1 pc.



Two SIZE3 cabinets placed on one 200 mm high welded plinth in special design

ACCESSORIES FOR SZE3 CABINETS

CABINET'S BASE

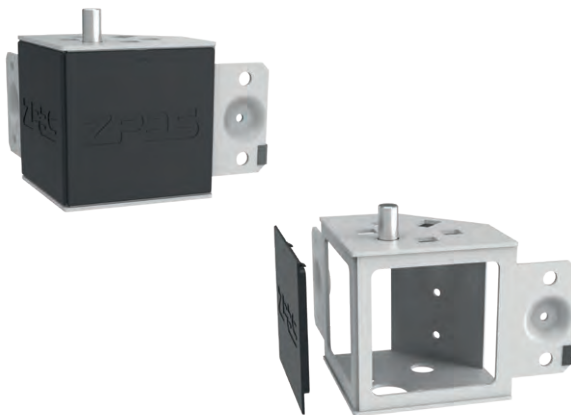


**Modular plinth**

Plinth consists of corners and removable side panels. Total weight of the cabinet is carried by plinth corners. It is possible to use the area under the cabinet by unscrewing the side panels. Plinth can be mounted to the base by optionally using rubber vibro-shock absorbers.

**Ordering method**

The plinth shall be ordered from the following components: plinth corners and plinth side panels depending on the width and depth of the cabinet.



**Plinth corners**

Corners are equipped with removable plates that ease the access to assembling and levelling elements. Corners can be equipped with levelling set or vibro-shock absorbers.

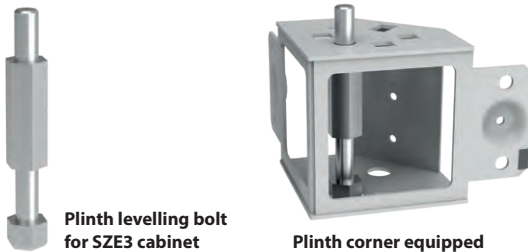
**Material**

Body: sheet steel powder painted in light grey (RAL 7035). Covers: black plastic.

**Scope of delivery**

Set of 4 corners include fixing accessories.

Height [mm]	Package	Catalogue number
100	4 pcs	WZ-6935-74-00-011



**Plinth levelling bolt for SZE3 cabinet**

**Plinth corner equipped with levelling bolt**

The upper part of the levelling bolt is used to join the plinth corner with the cabinet.

**Set for plinth levelling**

Plinth corners can be equipped with additional levelling bolts, that enable stable setting of the cabinet on uneven floor.

Adjustment range: 0–10 mm

**Material**

Galvanised steel

Product name	Package	Catalogue number
Set of 4 plinth levelling bolts for SZE2 cabinet	1 set	WZ-6935-Z1-02-000



**Vibro-shock absorber**



**Plinth corner with vibro-shock absorber**

**Vibro-shock absorbers**

Vibro-shock absorbers reduce the transmission of possible vibrations between the floor and the cabinet (e.g. in industrial buildings). Plinth with vibro-shock absorbers should be fixed into the room's floor.

**Material**

10 mm thick rubber.

**Scope of delivery**

Set of 4 vibro-shock absorbers.

Package	Catalogue number
1 set	WZ-M1Z-00-0048-000-4

ACCESSORIES FOR SIZE3 CABINETS

MOUNTING PLATE

**Plinth side panels**

There are three types of plinth side panels available. Side panels can be removed even when the cabinet is loaded with equipment.

**Material**

Sheet steel powder painted in light grey (RAL 7035).

**Scope of delivery**

Panel with fixing elements.

Product name	Length of side panel [mm]	Length of plinth's side [mm]	Catalogue number
Solid side panel	200	400	WZ-6935-46-09-011
	300	500	WZ-6935-46-07-011
	400	600	WZ-6935-46-05-011
	600	800	WZ-6935-46-03-011
	800	1000	WZ-6935-46-02-011
	1000	1200	WZ-6935-46-01-011
Perforated side panel	200	400	WZ-6935-92-09-011
	300	500	WZ-6935-92-07-011
	400	600	WZ-6935-92-05-011
	600	800	WZ-6935-92-03-011
	800	1000	WZ-6935-92-02-011
	1000	1200	WZ-6935-92-01-011
Side panel with brush opening	200	400	WZ-6935-94-09-011
	300	500	WZ-6935-94-07-011
	400	600	WZ-6935-94-05-011
	600	800	WZ-6935-94-03-011
	800	1000	WZ-6935-94-02-011
	1000	1200	WZ-6935-94-01-011

Package: 1 pc.



Solid side panel



Perforated side panel



Side panel with brush opening

**Set of elements for connecting plinths**

Plinths can be joined in row or stacked.

**Joining in rows**

In order to join two plinths, one connecting set is needed.

**Stacking**

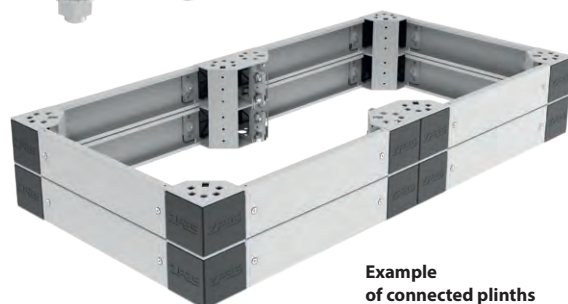
In order to stack two plinths, two connecting sets are needed.

Maximum allowed height: 4 plinths x 100 mm

Product description	Package	Catalogue number
4 bolts M10x20 4 washers 10,5 4 flange nuts M10	1 set	WZ-6935-Z1-03-000



Set of elements for connecting plinths



Example of connected plinths

## ACCESSORIES FOR SZE3 CABINETS

## MOUNTING PLATE

**Mounting plate**

The mounting plate is designed for installing different equipment inside the SZE3 cabinet. Detailed dimensions of the mounting plates are given in the drawing on page 69.

**Material**

Galvanized steel sheet, 3 mm thickness; dimensional tolerances sheet steel are normal according to EN 10143.

**Scope of delivery**

Mounting plate with fixing accessories for smooth adjustment within the cabinet's depth. Mounting plate guides are sold separately. In order to fasten the mounting plate on the back of the cabinet, between the rear posts of the frame, requires two additional lower brackets, ordered separately – see page 81.

For cabinet		Catalogue number
Height [mm]	Width [mm]	
2000	600	WZ-6282-33-08-000
	800	WZ-6282-33-07-000
	1000	WZ-6282-33-06-000
	1200	WZ-6282-33-05-000
2200	600	WZ-6282-33-04-000
	800	WZ-6282-33-03-000
	1000	WZ-6282-33-02-000
	1200	WZ-6282-33-01-000

Package: 1 pc.

**Note:**

On special order, we make hinged mounting plates, using galvanized steel sheet or textolite plate.

The mounting plate can also be powder-painted in RAL 7035 (standard colour) or any other colour on demand.

**Mounting plate guides**

The guides are designed for installing the mounting plate in the SZE3 cabinet. They make inserting and positioning the plate inside the cabinet easier.

**Material**

Al-Zn-coated steel sheet

**Scope of delivery**

Set of 2 guides together with accessories for fixing them on the bottom plate of the cabinet.

For cabinet depth [mm]	Catalogue number
400	WZ-6282-35-04-000
500	WZ-6282-35-03-000
600	WZ-6282-35-02-000
800	WZ-6282-35-01-000

Package: 1 set



ACCESSORIES FOR SIZE3 CABINETS

MOUNTING PLATE

**Mounting plate brackets**

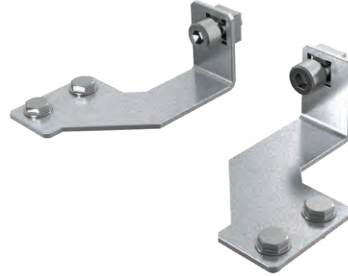
For fastening the mounting plate on the back of the closet, between the rear posts of the frame.

**Material**

Al-Zn-coated steel sheet

**Scope of delivery**

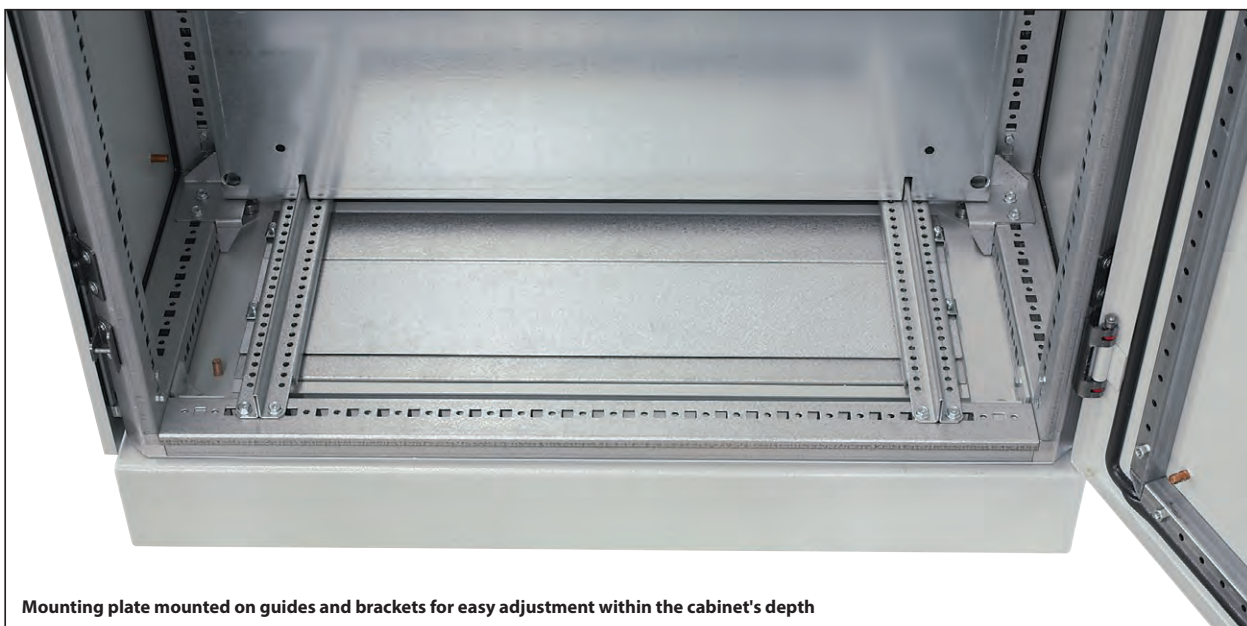
Two brackets (right and left) with fixing accessories.



Package	Catalogue number
1 set	WZ-6282-36-00-000



Mounting plate fastened on the back of the cabinet, between the frame posts



Mounting plate mounted on guides and brackets for easy adjustment within the cabinet's depth

MOUNTING PLATE	Accessories for <b>SIZE3</b> cabinets
	<b>INDUSTRIAL ENCLOSURES</b>