

ACCESSORIES FOR SIZE3 CABINETS

TOP PANEL

**Top panel with opening**

Top panel with opening can be used instead of the solid top panel.

With a sealing gasket and the opening for blanking plate (see page 95) or a roof fan unit (see catalogue ZPAS Data Communication Solutions).

Material

Sheet steel powder painted in light grey (RAL 7035).

Scope of delivery

Top panel with fixing accessories for mounting to the cabinet.

width [mm]	For cabinet		Opening dimensions A x B [mm]	Catalogue number
	depth [mm]			
600	400		380 x 210	WZ-6282-53-16-011
	500		380 x 210	WZ-6282-53-15-011
	600		380 x 380	WZ-6282-53-14-011
	800		380 x 380	WZ-6282-53-13-011
800	400		380 x 210	WZ-6282-53-12-011
	500		380 x 210	WZ-6282-53-11-011
	600		380 x 380	WZ-6282-53-10-011
	800		380 x 380	WZ-6282-53-09-011
1000	400		380 x 210	WZ-6282-53-08-011
	500		380 x 210	WZ-6282-53-07-011
	600		380 x 380	WZ-6282-53-06-011
	800		380 x 380	WZ-6282-53-05-011
1200	400		380 x 210	WZ-6282-53-04-011
	500		380 x 210	WZ-6282-53-03-011
	600		380 x 380	WZ-6282-53-02-011
	800		380 x 380	WZ-6282-53-01-011

Package: 1 pc.



ACCESSORIES FOR SIZE3 CABINETS

CABLE GLAND PLATES AND BLANKING PLATES

Blanking and cable entry plates for cabinet's top panel

For blanking the opening in the top panel (see page 94).

Material

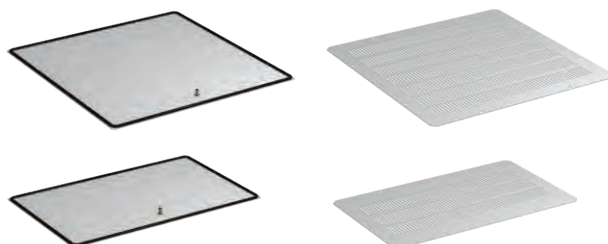
Sheet steel powder painted in RAL 7035.

Scope of delivery

Blanking or cable entry plate with mounting elements.

Type of blanking or cable entry plate	Protection degree of cabinets equipped with a blanking plate		For opening [mm]	Catalogue number
	Cabinet without a roof	Cabinet with a roof		
Solid blanking plate	IP 55	IP 55	380 x 380	WZ-4810-07-00-011
			380 x 210	WZ-1951-26-00-011
Perforated blanking plate	IP 20	IP 21	380 x 380	WZ-1718-39-01-011
			380 x 210	WZ-1718-39-02-011
Blanking plate with a fabric filter	IP 10	IP 21	380 x 380	WZ-1718-42-01-011
			380 x 210	WZ-1718-42-02-011
Cable entry plate with a brush strip	IP 00	IP 21	380 x 380	WZ-5271-10-00-011
			380 x 210	WZ-5271-14-00-011
Cable entry plate with a foam strip	IP 10	IP 21	380 x 380	WZ-1718-40-01-011
			380 x 210	WZ-1718-40-02-011
Cable entry plate with a fabric filter and a brush strip	IP 00	IP 21	380 x 380	WZ-SB76-00-00-011

Package: 1 pc.



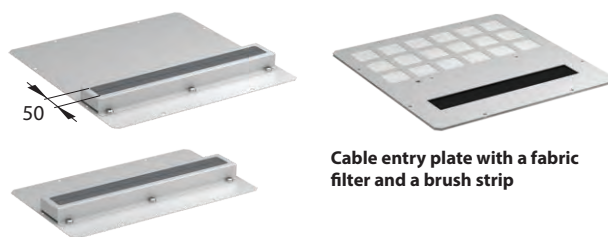
Solid blanking plates

Perforated blanking plates



Blanking plates with a fabric filter

Cable entry plates with a brush strip

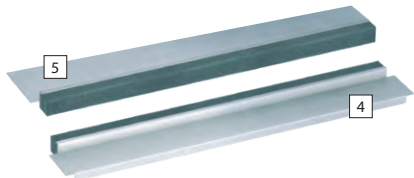


Cable entry plates with a foam strip

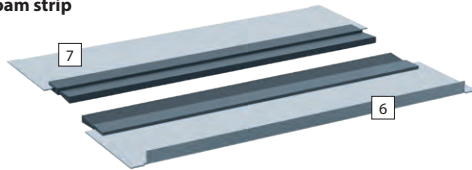


ACCESSORIES FOR SZE3 CABINETS

CABLE GLAND PLATES AND BLANKING PLATES



Spare kit of sliding gland plates with foam strip



Spare kit of sliding gland plates with brush strip

Spare kit of sliding gland plates for cabinet's bottom plate

Sliding gland plates with foam strip (4, 5) or brush strip (6, 7) are intended for application instead of standard sliding gland plates (1, 2).

They create a cable opening with adjustable width.

Foam strip protects cable isolation lead into the cabinet from any defects, at the same time increasing the cabinet's tightness. Brush strip protects against dust.

Material

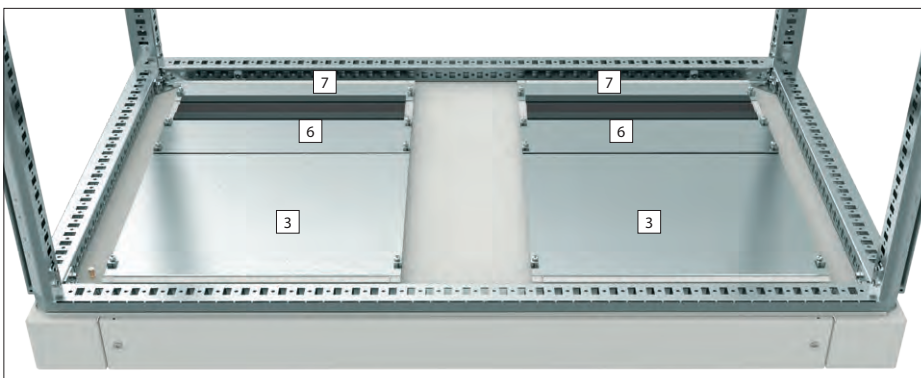
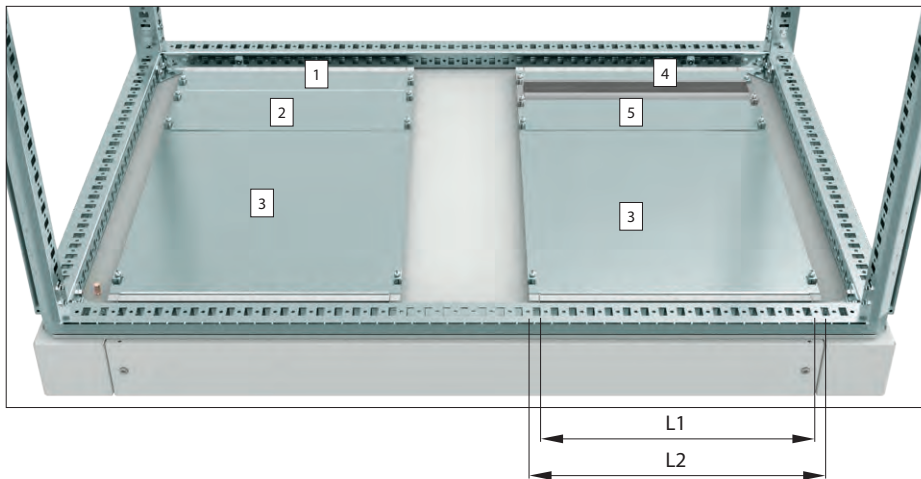
Al-Zn coated sheet steel, polyurethane foam, plastic brush.

Scope of delivery

Set of 2 sliding gland plates with foam strip (No. 4 and 5) or brush strip (No. 6 and 7). Used for one opening in SZE3 cabinet bottom plate (note: 1000 and 1200 mm wide cabinets have two openings in the bottom plate).

For cabinet width [mm]	Width of the opening for the sliding gland plate L1 [mm]	Width of the sliding gland plate L2 [mm]	Catalogue number	
			Kit of sliding gland plates with foam strip	Kit of sliding gland plates with brush strip
800	586	616	WZ-1951-81-01-000	WZ-8186-50-01-000
1200 or 600	386	416	WZ-1951-81-02-000	WZ-8186-50-02-000
1000	356	386	WZ-1951-81-03-000	WZ-8186-50-03-000

Package: 1 set



Method of fastening sliding gland plates in the bottom plate of the SZE3 cabinet

Supply of all cabinets includes:

1, 2, 3 – standard sliding gland plates (without foam or brush) for each opening in the bottom plate of the cabinet.

Supplementary accessories:

4, 5 - spare kit of sliding gland plates with foam strip or
6, 7 - spare kit of sliding gland plates with brush strip (intended for fastening instead of standard gland plates without foam or brush)

ACCESSORIES FOR SZE3 CABINETS

CABLE GLAND PLATES • EARTHING

Kit of sliding gland plates with a foam strip

For 800 mm deep SZE3 cabinets.

Material

Al-Zn coated sheet steel, polyurethane foam.

Scope of delivery

Set of 4 sliding gland plates with foam, 1 central plate, fixing elements. Used for one opening in SZE3 cabinet bottom plate (note: 1000 and 1200 mm wide cabinets have two openings in the bottom plate).



For cabinet width [mm]	Width of the opening for the sliding gland plate L1 [mm]	Width of the sliding gland plate L2 [mm]	Catalogue number
800	586	616	WZ-5716-13-05-000
1200 or 600	386	416	WZ-5716-13-07-000
1000	356	386	WZ-5716-13-03-000

Package: 1 set

Vertical earthing bar

Mounted vertically to the 19" swing frame using brackets. It has threaded holes M6 for cables fixing.

Length: 1650 mm

Material

Copper bar 30 x 3 mm

Scope of delivery

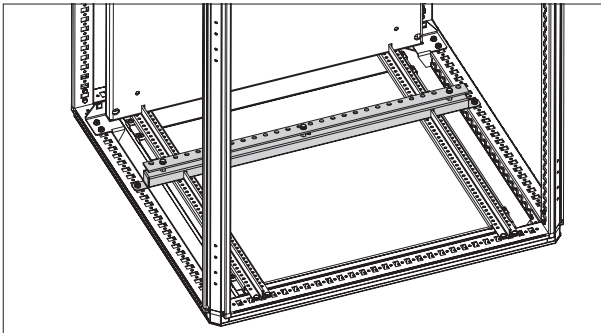
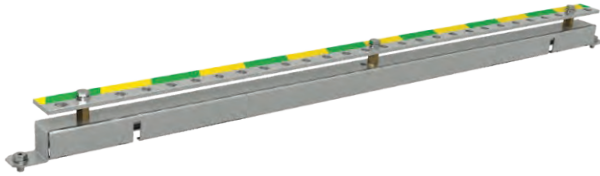
Earthing bar with brackets and fixing elements.

Package	Catalogue number
1 set	WZ-7580-11-00-000



ACCESSORIES FOR SZE3 CABINETS

EARTHING AND SHIELDING

**Earthing bar**

Earthing bar with a bracket for mounting on horizontal profiles of SZE3 cabinet's frame. It has M8 threaded holes for fastening cables. Bar mounted to the bracket using metal fixing/spacer bolts.

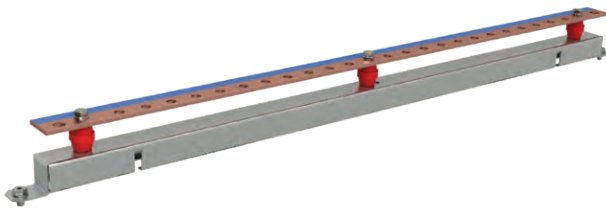
Material

Earthing bar - zinc coated steel
Mounting bracket - Al-Zn coated sheet steel

Scope of delivery

Earthing bar with bracket and fixings accessories for assembling into the cabinet.

For cabinet width [mm]	Package	Catalogue number
1200	1 pc.	WZ-6282-78-01-000
1000	1 pc.	WZ-6282-78-02-000
800	1 pc.	WZ-6282-78-03-000
600	1 pc.	WZ-6282-78-04-000

**Shielding bar**

Shielding bar with a bracket for mounting on horizontal profiles of SZE3 cabinet's frame. It has M8 threaded holes for fastening cables. Bar mounted to the bracket using insulators.

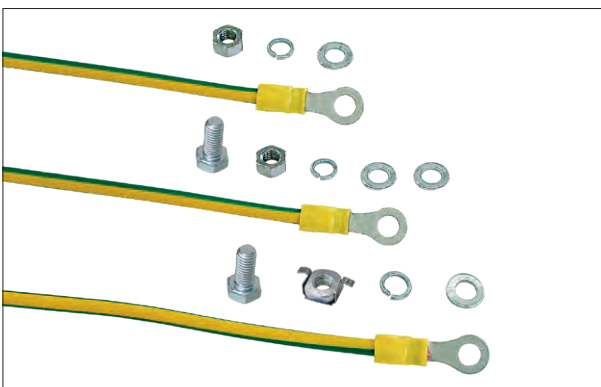
Material

Shielding bar - copper
Mounting bracket - Al-Zn coated sheet steel

Scope of delivery

Shielding bar with bracket and fixing accessories for assembling into the cabinet.

For cabinet width [mm]	Package	Catalogue number
1200	1 pc.	WZ-6282-79-01-000
1000	1 pc.	WZ-6282-79-02-000
800	1 pc.	WZ-6282-79-03-000
600	1 pc.	WZ-6282-79-04-000

**Earthing cable set**

Copper wires for making compensation protective connections between all the removable components of the cabinet, its structure, and the earthing strip. Cables are terminated with ring terminals for M8 bolts.

Material

Copper, galvanized steel, stainless steel

Scope of delivery

Set: 9 insulated strand, full section 6 mm², fixing accessories.

Package	Catalogue number
1 set	WZ-6282-50-00-000