

ACCESSORIES FOR SZE2 CABINETS

HEATING, VENTILATING AND COOLING

Heater

Compact heat device equipped with fan.

Technical data

- Power supply 230 V AC 50-60 Hz
- Heating force 200/400 W
- Fan capacity 10 m³ /h
- Protection degree IP 20
- Dimensions 71x70x95 mm

Features:

- 2 power ranges depending on how connect the power cord,
- independent power supply circuit of the fan.

Scope of delivery:

- heater,
- DIN rail,
- two holders,
- screw clamps for connecting power cords.



Package	Catalogue number
1 pc.	WN-0316-09-00

Thermostat

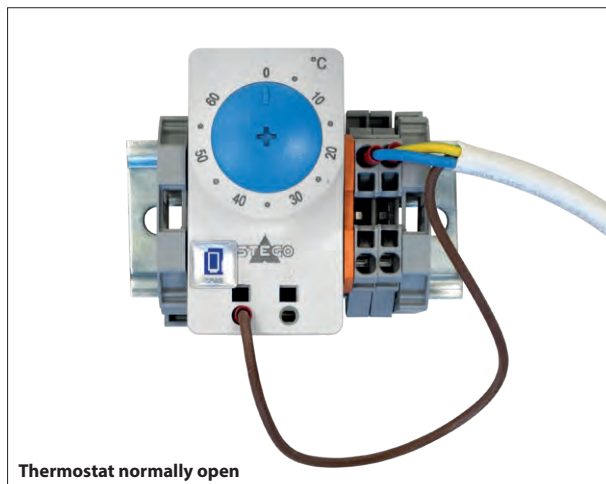
Thermostatic regulator indicated for controlling fans, heaters, heat exchanger or for attaching signal generator at exceeding preset temperature limits.

Technical data

- Sensor element:
thermal bimetal
- Temperature range:
0-60 °C, hysteresis ca. 7 °C
- Contact types:
snap action contact
- Power carrying capacity:
6 A (1) 250 V AC
- Radio frequency interference:
N (according to VDE 0875)

Scope of delivery:

- thermostat,
- DIN rail,
- cable,
- two holders,
- two clamps.

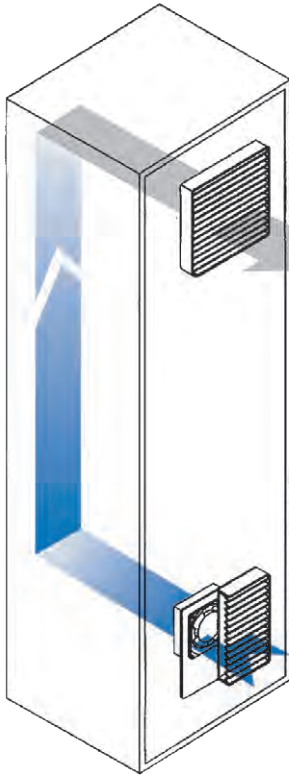


Thermostat normally open

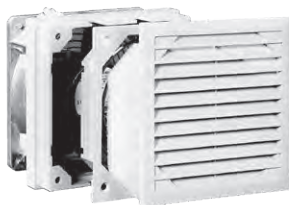
Type of thermostat	Colour of handwheel	Package	Catalogue number
Normally closed Switches off devices (e.g. heaters) at selected temperature limit.	●	1 pc.	WN-0201-01-00-000/A
Normally open Switches on ventilation system (e.g. fans) at selected temperature limit.	●	1 pc.	WN-0201-02-00-000/A

ACCESSORIES FOR SZE2 CABINETS

HEATING, VENTILATING AND COOLING



Example of ventilation of the cabinet with forced air circulation



Example of filter fans

Filter fans and exhaust filters

- Intended for mounting in side panels and door of the cabinet.
- Fastened with latches and screws.
- Enclosure made of ABS material, light grey (RAL 7035).
- Equipped with high quality filter inserts and gaskets.
- Possibility of changing direction of air flow by turning the fan.

Type of fan supply

230 V AC (50/60 Hz)

On request: 115 V AC (50/60 Hz) or 24 V DC

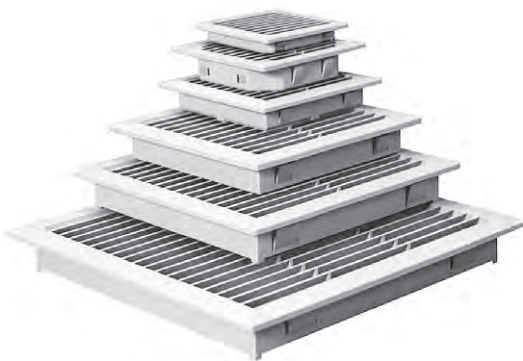
Protection degree

IP 54 in accordance with EN 60529

Selection of filter fans and exhaust filters should be consulted with ZPAS customer service.

FILTER FANS

Type	Air flow through filter fan [m ³ /h]		Dimensions [mm]		Catalogue number
	without filter	with filter	montage opening	overall dimensions	
LV100	25	15	92 x 92	105 x 105	M1S-01-0026
LV200	58	40	116 x 116	130 x 130	M1S-01-0043
LV250	63	42	125 x 125	148 x 148	M1S-01-0074
LV300	115	90	177 x 177	204 x 204	M1S-00-0010
LV400	250	205	223 x 223	250 x 250	M1S-00-0011
LV410	250	205	223 x 223	250 x 250	M1S-01-0070
LV500	315	235	223 x 223	250 x 250	M1S-01-0066
LV550	370	260	223 x 223	250 x 250	M1S-00-0055
LV600	580	385	292 x 292	323 x 323	M1S-01-0067
LV700	730	530	292 x 292	323 x 323	M1S-00-0045
LV800	930	610	292 x 292	323 x 323	M1S-01-0104

EXHAUST FILTER

Exhaust filter

Type	Dimensions [mm]		Catalogue number
	montage opening	overall dimensions	
GV100	92 x 92	105 x 105	M1S-03-0007
GV200	116 x 116	130 x 130	M1S-03-0023
GV250	125 x 125	148 x 148	M1S-03-0030
GV300	177 x 177	204 x 204	M1S-03-0010
GV400/500	223 x 223	250 x 250	M1S-03-0011
GV600/700	292 x 292	323 x 323	M1S-03-0031

ACCESSORIES FOR SZE2 CABINETS

HEATING, VENTILATING AND COOLING

Air conditioner and heat exchanger

On customer's request, SZE2 cabinets can be equipped with an air conditioner or heat exchanger (air/air type) fixed on the doors, side panels or in the top plate.

Mode of operation

Internal cabinet air is sucked up from the top, cooled inside the air conditioner or heat exchanger and returned the cabinet at a high speed towards the bottom. This solution ensures optimum cooling of the entire cabinet.

Protection degree

Air conditioners and heat exchangers in standard ZPAS offer have IP 54 protection degree.



Heat exchangers

AVAILABLE TYPES OF AIR CONDITIONERS

Side/door-mounted

- PROTHERM Indoor
- basic series of air conditioners
- 330-4000 W cooling power
- designed for mounting on cabinet side panel or door

SLIM

- for applications where flat air conditioner is required
- 500-3000 W cooling power
- designed for mounting on cabinet side panel or on cabinet door

PROTHERM Outdoor

- for use outdoors
- 550-4000 W cooling power
- two mounting options: outside or inside a cabinet
- optional built-in heater

Roof-mounted

TOP

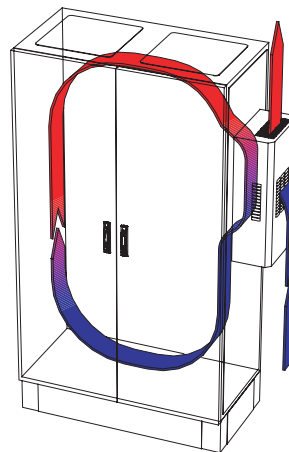
- mounted on cabinet roof
- 330-5200 W cooling power
- most models equipped with triple condensate protection system

Modular

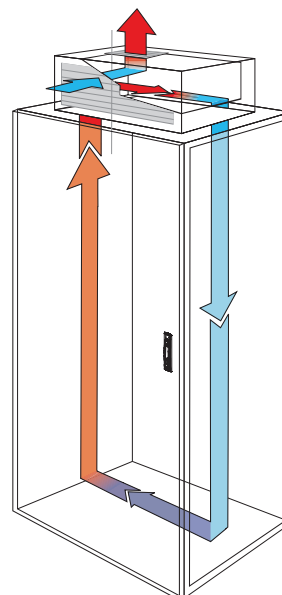
MODULE

- for cabinet sets, mounted on the side of a cabinet with a depth 600 or 800 mm
- 5800-10000 W cooling power
- all models with electronic control

Selection of the air conditioner or heat exchanger should be consulted with ZPAS customer service.



Air conditioner fixed on cabinet's side panel



Air conditioner fixed on cabinet's top plate

