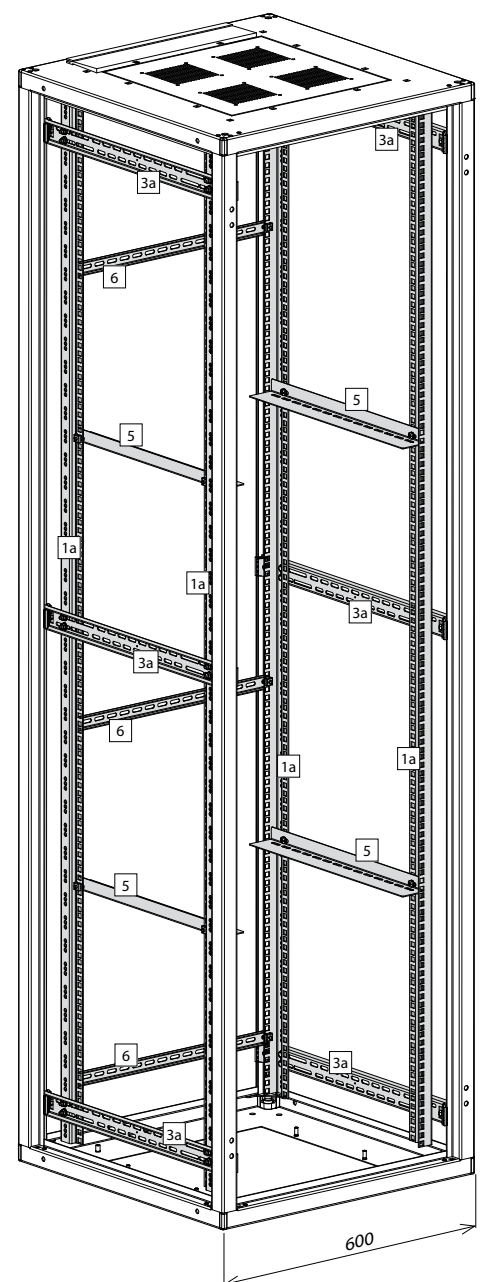
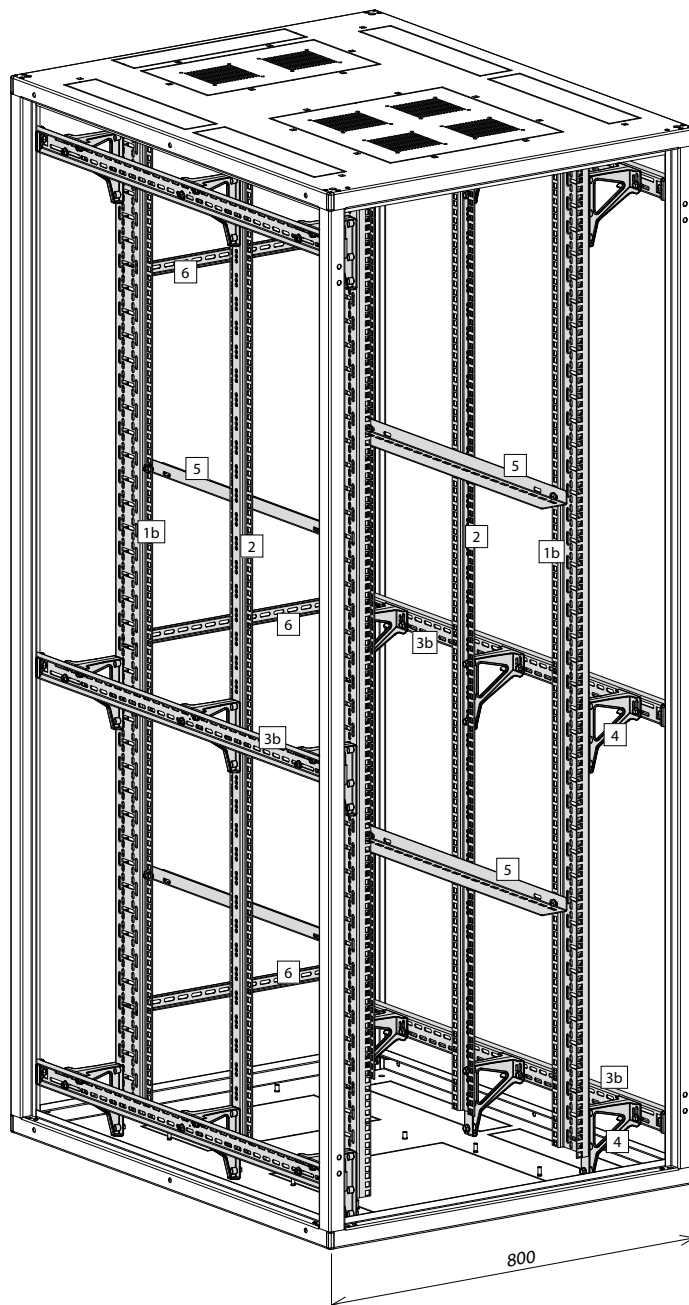


ACCESSORIES FOR CABINETS AND OPEN RACKS

19" FRAME AND FIXING ACCESSORIES



Elements of 19" rack frame

- 1a. 19" mounting profile (rack rail), type STANDARD, 15 mm deep
- 1b. 19" mounting profile (rack rail), type PREMIUM, 12 mm deep
- 2. Middle mounting profile, type STANDARD, 12 mm deep
- 3a. C-profile for 15 mm deep mounting profiles
- 3b. C-profile for 12 mm deep mounting profiles
- 4. Outrigger
- 5. Guide bar
- 6. Cross bar

ACCESSORIES FOR CABINETS AND OPEN RACKS

19" FRAME AND FIXING ACCESSORIES

Mounting profiles

For installing 19" equipment in cabinets: **SZB IT, DSR IT, SZE2 PC**. In cabinets 600 mm wide, mounting profiles are fixed directly to the C-profiles; in cabinets 800 mm wide, in order to achieve 19" spacing, it is necessary to use outriggers.

Notes: Only 15 mm deep mounting profiles may be used in SZE2 PC cabinets.
Mounting profiles for wall-mounted cabinets are described on page 57.

Material

Al-Zn coated sheet steel.

Scope of delivery

Mounting bar or mounting angle without fixing accessories.
(Fixing accessories should be ordered separately.)

Height [U = 44.45 mm]	Catalogue number			
	19" mounting profile type STANDARD, 15 mm deep	Middle mounting profile type STANDARD, 15 mm deep	19" mounting profile type PREMIUM, 12 mm deep	Middle mounting profile type STANDARD, 12 mm deep
18 U	WZ-1718-97-09-000	WZ-1718-98-09-000	WZ-7209-02-09-000	WZ-7782-02-19-000
24 U	WZ-1718-97-08-000	WZ-1718-98-08-000	WZ-7209-02-08-000	WZ-7782-02-15-000
33 U	WZ-1718-97-14-000	WZ-1718-98-15-000	WZ-7209-02-14-000	WZ-7782-02-09-000
38 U	WZ-1718-97-04-000	WZ-1718-98-04-000	WZ-7209-02-04-000	WZ-7782-02-07-000
42 U	WZ-1718-97-02-000	WZ-1718-98-02-000	WZ-7209-02-02-000	WZ-7782-02-04-000
45 U	WZ-1718-97-01-000	WZ-1718-98-01-000	WZ-7209-02-01-000	WZ-7782-02-03-000
47 U	WZ-1718-97-20-000	WZ-1718-98-13-000	WZ-7209-02-20-000	WZ-7782-02-02-000

Package: 1 pc.

C-profiles

For fixing mounting profiles, mounting angles, cable ducts and cable trays in **SZB IT** and **DSR IT** cabinets.

Available in two versions with different depths:

- 18 mm deep C-profiles for fixing mounting profiles with a depth of 15 mm,
- 21 mm deep C-profiles for fixing mounting profiles with a depth of 12 mm.

Material

Al-Zn coated sheet steel.

Scope of delivery

Set of 2 C-profiles with fixing accessories for assembling into the cabinet.

For cabinet depth [mm]	Catalogue number	
	C-profiles for 15 mm deep mounting profiles	C-profiles for 12 mm deep mounting profiles
600	WZ-5507-16-01-000	WZ-7782-06-06-000
800	WZ-5507-16-02-000	WZ-7782-06-05-000
1000	WZ-5507-16-03-000	WZ-7782-06-03-000
1200	WZ-5507-16-08-000	WZ-7782-06-01-000



Package: 2 pcs

ACCESSORIES FOR CABINETS AND OPEN RACKS

19" FRAME AND FIXING ACCESSORIES

**Outrigger**

For fixing mounting profiles in **800 mm** wide **SZB IT**, **DSR IT** and **SZE2 PC** cabinets, in order to achieve 19" spacing.

Depending on the cabinet design, two or three outriggers are required for assembling one mounting profile.

Material

zamak casting

Scope of delivery

One outrigger with fixing accessories to install the outrigger to mounting profile/angle and to C-profile.

Package	Catalogue number
1 pc.	WZ-5205-90-00-C12



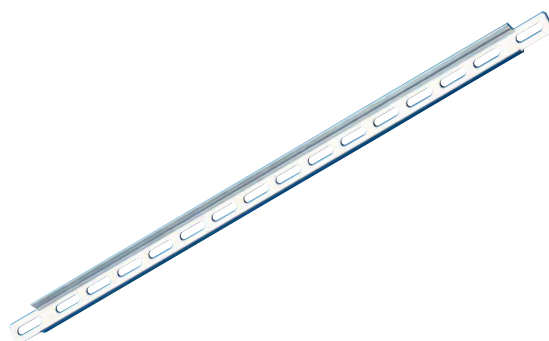
Elements for fixing one mounting profile to 600 mm wide **SZB IT**, **DSR IT** or **SZE2 PC** cabinet (without outrigger)



Elements for fixing appliances to the mounting profiles

Fixing accessories

Set description	Package	Catalogue number
Elements for fixing one mounting profile to 600 mm wide SZB IT , DSR IT or SZE2 PC cabinet (without outrigger): Flange bolt M6x12 - 3 pcs Flange nut M6 - 3 pcs	1 set	WZ-8059-Z1-01-000
Elements for fixing appliances to the mounting profiles: Screw M6x16 - 10 pcs. Cage nut M6 - 10 pcs. Plastic washer - 10 pcs.	1 set	T1Z-00-0002

**19" cross bar**

Fixed to the rear mounting profiles in 19" cabinets.

For installing cables or supporting appliances in the cabinet. With holes for M6 bolts.

Material

Zinc-coated sheet steel

Scope of delivery

Cross bar with fixing accessories.

Length [mm]	Package	Catalogue number
500	1 pc.	WZ-SB00-28-01-000

ACCESSORIES FOR CABINETS AND OPEN RACKS

19" FRAME AND FIXING ACCESSORIES

Guide bar

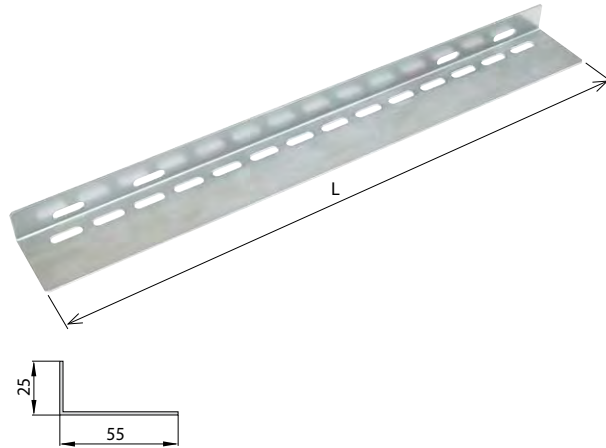
Fixed horizontally to the front and rear 19" mounting profiles, parallel to the cabinet's side.
For supporting appliances in the cabinet.
With oblong holes measuring 6.5 x 22 mm.

Material

Zinc-coated sheet steel.

Scope of delivery

Guide bar with fixing accessories.



Length L [mm]	Catalogue number
250	WZ-SB00-27-05-000
350	WZ-SB00-27-04-000
450	WZ-SB00-27-03-000
550	WZ-SB00-27-02-000
650	WZ-SB00-27-01-000

Package: 1 pc.

Adjustable guides

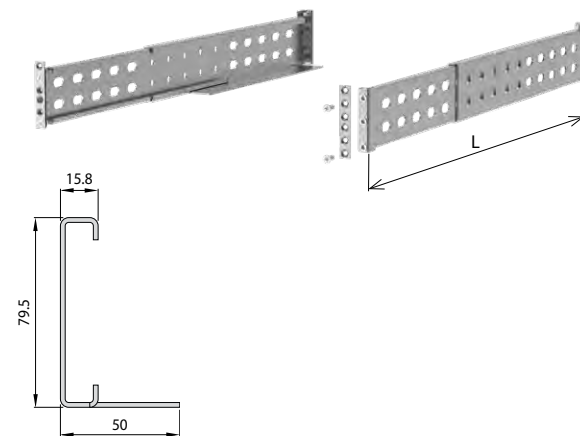
Fixed horizontally to the front and rear 19" mounting profiles, parallel to the cabinet's side.
For supporting appliances in the cabinet.
With oblong holes measuring 12.5 x 25 mm.

Material

AL-Zn-coated sheet steel.

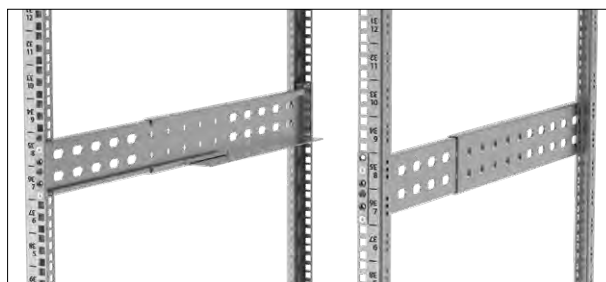
Scope of delivery

Set of two adjustable guides with fixing accessories for mounting in the cabinet.



Length L [mm]	Catalogue number
350-600	WZ-8672-20-01-000
550-900	WZ-8672-20-02-000
850-1150	WZ-8672-20-03-000

Package: 1 set



Adjustable guides fixed on 19" mounting profiles

ACCESSORIES FOR CABINETS AND OPEN RACKS

BAYING CABINETS IN ROWS • LIGHTING • POCKETS



Elements for baying cabinets in rows

Sets of elements for baying **SZB IT** or **DSR IT** cabinets.

One set is intended for baying two cabinets.

The cabinets are connected by means of holes in the sides of the bottom and top plates.

In the case of cabinets with high load, a set including clamp connectors is recommended - see page 39.

Set contents	Package	Catalogue number
Flange bolt M8 - 4 pcs Flange nut M8 - 4 pcs	1 set	WZ-2565-13-03-000



Lighting kit with fixing bracket in light grey (RAL 7035) colour

Lighting kit

For floor-standing and wall-mounted cabinets.
19" assembly, usable height 1 U.

Material of mounting bracket

Sheet steel, powder painted in light grey (RAL 7035) or black (RAL 9005).

Scope of delivery

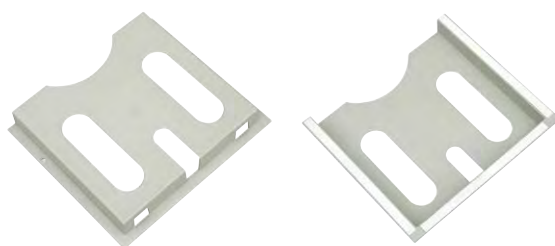
Electric light fitting with a LED lamp 230 V, 5 W and a switch, a bracket for fixing the electric light fitting on the 19" mounting profiles, power cord, fixing accessories.

Power cord with a door switch is ordered separately.



Power cord with a door switch for SZB IT and DSR IT cabinets

Product name	Package	Colour	Catalogue number
Lighting kit	1 set	RAL 7035	WN-0208-05-01-011-02
		RAL 9005	WN-0208-05-01-161-02
Power cord with a door switch for SZB IT and DSR IT cabinets	1 set	-	WN-0208-04-05-000



Document pocket

For fixing on the cabinet's door.
A4 size, light grey (RAL 7035) colour.

Material

Plastic

Scope of delivery

Pocket with self-adhesive fixing tape.

Package	Colour	Catalogue number
1 pc.	RAL 7035	WZ-SB00-40-00-011

ACCESSORIES FOR CABINETS AND OPEN RACKS

EARTHING ELEMENTS

Earthing conductor set

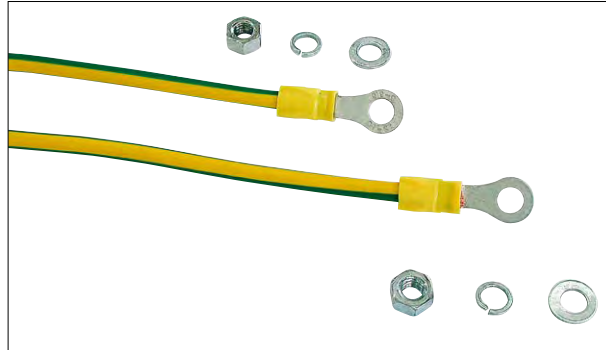
Insulated copper conductors for joining removable elements of the cabinet with earthing bar.
Equipped with contact eyes Ø 6 mm.

Material

Copper conductor, cross-section 6 mm².

Scope of delivery

Earthing conductors are sold in sets in accordance with the chart below.



Description of set	Package	Catalogue number
Conductor 300 mm long - 4 pcs. Conductor 400 mm long - 2 pcs. Conductor 600 mm long - 1 pc. Fixing accessories	1 set	WZ-SB12-00-01-000
Conductor 300 mm long - 2 pcs. Conductor 400 mm long - 2 pcs. Conductor 600 mm long - 1 pc. Fixing accessories	1 set	WZ-SB12-00-02-000

Copper earthing bar

For **SZB IT** or **DSR IT** cabinets, as an alternative for the factory-installed galvanized steel earthing bar.

Material

Copper.

Scope of delivery

Earthing bar with bolts for assembling in the cabinet.



Product name	Package	Catalogue number
Earthing bar Cu 15x5x375 mm	1 pc.	WZ-3393-11-00-000